



COMPACT 4G LTE  
M2M ROUTER



# DIGI TRANSPORT® WR11

Secure 3G/4G LTE cellular router for retail, kiosk and industrial control applications

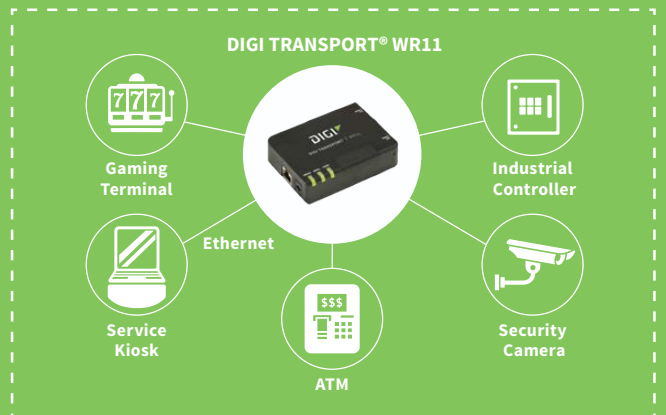
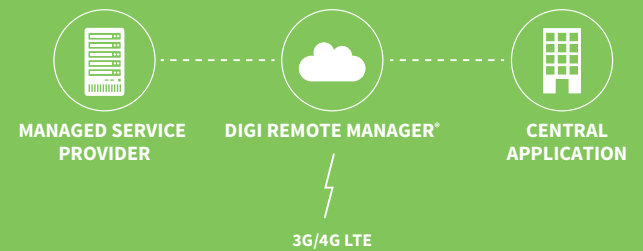
Digi TransPort WR11 delivers a cost-optimized 4G LTE connection to mission critical M2M applications around the world. The router comes with Digi’s enterprise software configuration by default, which means network administrators have the routing, security, VPN and stateful firewall tools they need to create a PCI compliant network right out of the box.

Digi management solutions provide easy setup, configuration and maintenance of large installations of remote Digi TransPort devices. Digi Remote Manager® offers web-based device management for remote Digi cellular routers and gateways.

## BENEFITS:

- Global HSPA+ and 4G LTE support and certification
- Extremely resilient cellular connection through patented Digi SureLink™, VRRP+ protocol and dual SIM slots
- Enterprise routing features for security, logging and redundancy (e.g., stateful firewall, VPN, SNMP); no annual enterprise software license required
- Digi Remote Manager provides mass configuration, device management and troubleshooting tools
- 5-year warranty standard—no additional cost

## APPLICATION EXAMPLE



## RELATED PRODUCTS



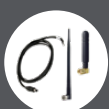
Digi TransPort®  
WR21



Digi TransPort®  
WR31



Digi TransPort®  
WR44 R



Accessories



Digi Remote  
Manager®

# SPECIFICATIONS

# Digi TransPort® WR11

## 3G/4G LTE SPECS

<b>LTE – NORTH AMERICA (L6)</b>	LTE CAT 3: 700(B17)/850(B5)/AWS(B4)/1900(B2) 3G HSPA+: 850/1900 MHz 2G Edge: 850/1900 MHz Transfer rate (max): 100 Mbps down, 50Mbps up Approvals: PTCRB, AT&T, Telus, Bell
<b>LTE – VERIZON (L8)</b>	Coverage: United States LTE CAT 3: 700(B13)/AWS(B4) Transfer rate (max): 100 Mbps down, 50Mbps up Approvals: Verizon
<b>LTE – EMEA/APAC (L7)</b>	LTE CAT 3: 800(B20)/1800(B3)/2600(B7) 3G HSPA+: 900/2100 MHz 2G Edge/GPRS: 850/900/1800/1900 MHz Transfer rate (max): 100 Mbps down, 50Mbps up Approvals: Vodafone
<b>GLOBAL HSPA+ - (U9)</b>	3G HSPA+: 850/900/1700AWS/1900/2100 MHz 2G EDGE/GPRS: 850/900/1800/1900 MHz Transfer rate (max): 21 Mbps down, 5.76 Mbps up Approvals: PTCRB, Vodafone
<b>CONNECTORS</b>	(2) 50 Ω SMA (Center pin: female); (1) connector for non-LTE models
<b>SIM SLOTS</b>	(2) Mini-SIM (2FF)
<b>SIM SECURITY</b>	Snap-fit SIM cover

## SOFTWARE & MANAGEMENT

<b>REMOTE MANAGEMENT</b>	Digi Remote Manager® (cloud based); SNMP v1/v2c/v3 (user installed/managed)
<b>LOCAL MANAGEMENT</b>	WebUI (HTTP/HTTPS); CLI (Telnet, SSH, SMS)
<b>MANAGEMENT/TROUBLESHOOTING TOOLS</b>	FTP, SFTP, SCP; Protocol analyzer with PCAP for Wireshark; Event logging with Syslog and SMTP; NTP/SNTP
<b>MEMORY</b>	20 MB RAM, 10 MB file space

## ETHERNET

<b>PORTS</b>	(1) RJ-45; 10/100 Mbps (auto-sensing)
--------------	---------------------------------------

## PHYSICAL

<b>DIMENSIONS (L X W X H)</b>	3 in x 4 in x 1 in (7.62 cm x 10.16 cm x 2.54 cm)
<b>WEIGHT</b>	0.25 lb (0.11 kg)
<b>STATUS LEDS</b>	Power on, WWAN signal strength, WWAN service
<b>ENCLOSURE</b>	Polycarbonate / IP30

## POWER REQUIREMENTS

<b>POWER INPUT</b>	5Vdc, 15W minimum power source required
<b>POWER SUPPLY</b>	Must be used with a Digi approved power supply
<b>POWER CONSUMPTION</b>	3.5W typical (Idle); 10W typical (Peak Tx/Rx)

## ENVIRONMENTAL

<b>OPERATING TEMPERATURE</b>	0° C to +40° C (32° F to +104° F)
<b>RELATIVE HUMIDITY</b>	5% to 95% (non-condensing)

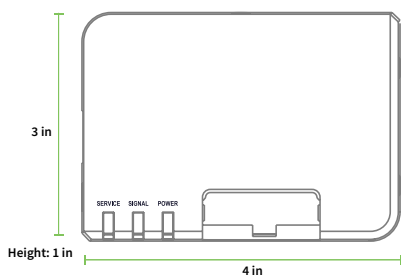
## APPROVALS

<b>CELLULAR</b>	PTCRB
<b>SAFETY</b>	UL 60950, CSA 22.2 No. 60950, EN60950
<b>EMISSIONS/IMMUNITY</b>	CE, FCC Part 15 Class B, AS/NZS CISPR 22, EN55024, EN55022 Class B

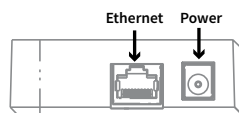
## WARRANTY

<b>PRODUCT WARRANTY</b>	5 years
-------------------------	---------

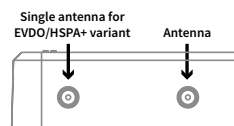
DIGI TRANSPORT® WR11 - TOP



LEFT SIDE

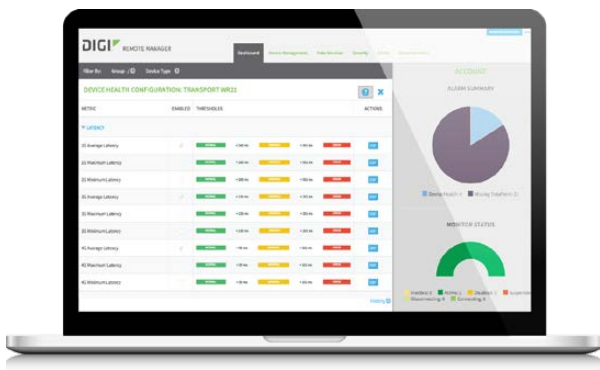


RIGHT SIDE



ENTERPRISE SOFTWARE	DESCRIPTION
PROTOCOL SUPPORT	HTTP, HTTPS, FTP, SFTP, SSL, SMTP, SNMP (v1/v2c/v3), SSH, Telnet and CLI for web management; remote management via Digi Remote Manager; SMS management, protocol analyzer, ability to capture PCAP for use with Wireshark; DynDNS; Dynamic DNS client compatible with BIND9/No-IP/DynDNS
SECURITY/VPN	IP filtering, Stateful inspection firewall with scripting, address and port translation; VPN: IPsec with IKEv1, IKEv2, NAT Traversal; SSL, SSLv2, SSLv3, FIPS 197, Open VPN client and server; PPTP, L2TP; (5) VPN Tunnels (upgradable to a maximum of 50); Cryptology: SHA-1, MD5, RSA; Encryption: DES, 3DES and AES up to 256-bit (CBC mode for IPsec); Authentication: RADIUS, TACACS+, SCEP for X.509; certificates; Content Filtering (via 3rd party); MAC Address Filtering; VLAN support
ROUTING/FAILOVER	IP pass-through; NAT, NAPT with IP Port Forwarding; Ethernet Bridging; GRE; Multicast Routing; Routing Protocols: PPP, PPPoE, RIP (v1, v2) OSPF, SRI, BGP, iGMP routing (multicast); RSTP (Rapid Spanning Tree Protocol); IP Failover: VRRP, VRRP+TM; Automatic failover/failback to second GSM network/Standby APN
OTHER PROTOCOLS	DHCP; Dynamic DNS client compatible with BIND9/No-IP/DynDNS; QoS via TOS/DSCP/WRED

## DIGI REMOTE MANAGER®



### CAPABILITIES

- Centralized management of remote devices over 3G/4G LTE
- Define standard configurations and automatically monitor individual devices for PCI security compliance
- Report and alert on performance statistics, including connection history, signal quality, latency, data usage and packet loss
- No servers or applications to operate and maintain
- Complete tasks for your entire device network in minutes
- Edit configurations and update firmware for your individual devices or groups
- Monitor the status and location of your remote device via a web browser
- Active or deactivate cellular lines and monitor data to ensure you never incur overage charges

### INFRASTRUCTURE

- Hosted in a commercial-grade SAS 70-certified environment
- Superior availability, operating to 99.9% or greater
- Open APIs available to support application development

### SECURITY

- Certified SSAE-16 facilities
- Member of the Cloud Security Alliance
- Over 175 Security Controls in place to protect your data
- Enables compliance with security frameworks like PCI, HIPAA, NIST and more
- Earned SkyHigh's Cloud Trust Program highest ranking of Enterprise-Ready

PART NUMBERS	DIGI TRANSPORT WR11
WR11-U900-DE1-SW	Digi TransPort WR11 - HSPA+ Global, Single Ethernet
WR11-L600-DE1-SU	Digi TransPort WR11 - 4G LTE North America, Single Ethernet
WR11-L700-DE1-SW	Digi TransPort WR11 - 4G LTE EMEA/APAC, Single Ethernet
WR11-L800-DE1-SU	Digi TransPort WR11 - 4G LTE Verizon, Single Ethernet

PART NUMBERS	ACCESSORIES*
76000954	Antenna Base – SMA, 1m, RG174
76000926	Antenna - Cellular, 3G/4G/LTE
29000145	Antenna - Cellular, Direct Mount, Penta Band
76002062	Accessory Kit - AC Power, Std Temperature, US Plug
76002063	Accessory Kit - AC Power, Std Temperature, Intl Plugs
76002064	Accessory Kit - AC Power, Extd Temperature, Intl Plugs
76002065	Accessory Kit - DC Power
76002074	Accessory Kit - AC Power, Std Temperature, EU Plug
76002021	AC Power Supply - Std Temperature, Universal plugs (US, EU, UK, AU) to 5VDC - 2.5mm locking barrel plug
76000976	DC Power Supply - Converts 9-30VDC to 5VDC - 2.5mm locking barrel plug
76000934	AC Power Supply - US Plug to 5VDC - 2.5mm locking barrel plug
76000826	Cable - Ethernet, RJ45 to RJ45, 2m

\*Sold separately, unless otherwise noted.

FOR MORE INFORMATION  
PLEASE VISIT [WWW.DIGI.COM](http://WWW.DIGI.COM)

**DIGI SERVICE AND SUPPORT** / You can purchase with confidence knowing that Digi is always available to serve you with expert technical support and our industry leading warranty. For detailed information visit [www.digi.com/support](http://www.digi.com/support).

© 1996-2018 Digi International Inc. All rights reserved.  
All trademarks are the property of their respective owners.

91004201  
A4/818

**DIGI INTERNATIONAL WORLDWIDE HQ**  
877-912-3444 / 952-912-3444 / [www.digi.com](http://www.digi.com)

**DIGI INTERNATIONAL GERMANY**  
+49-89-540-428-0

**DIGI INTERNATIONAL JAPAN**  
+81-3-5428-0261 / [www.digi-intl.co.jp](http://www.digi-intl.co.jp)

**DIGI INTERNATIONAL SINGAPORE**  
+65-6213-5380

**DIGI INTERNATIONAL CHINA**  
+86-21-50492199 / [www.digi.com.cn](http://www.digi.com.cn)

